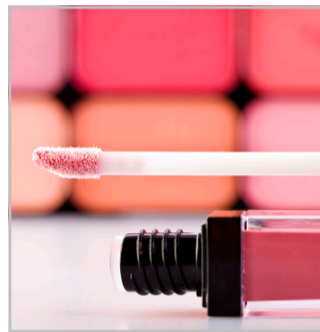




**Typical Applications**

- Food packaging
- Cosmetic applications
- Tubes
- Conveyor belts
- Coffee machines
- Household applications



**Our Know-how – Your Advantage**

- Regulation (EU) No 10/2011
- US FDA CFR 21 recipe conformity
- Optimized mechanical properties (tensile strength, tear resistance)
- Adhesion to polar thermoplastics as Tritan, SAN, PC, PET, PETG, and ABS
- Japan Food Contact
- California Proposition 65
- REACH, RoHs
- Free from phthalates, bisphenol A, and latex
- Free from heavy metals

**Technical Data**

		TF7FMA FC/AD1 Series	<b>NEW</b> TF7PCM-NTRL FC/CM3/AD1 Series	<b>NEW</b> TF8PCM-LCNT FC/CM3/AD1 Series
Color		natural	natural	translucent
Hardness	Sh A	70	70	80
Density	g/cm <sup>3</sup>	1.100	1.090	1.090
Tensile Strength	MPa	4.5	18.0	35.0
Elongation at break	%	480	450	450
Tear Resistance	N/mm	18.0	50.0	45.0
Adhesion to ABS	N/mm	4.5 (B)	3.3 (C)	7.1 (C)
Adhesion to Tritan	N/mm	6.1 (D)	3.5 (C)	3.8 (B)
(EU) No 10/2011				
▪ Conformity		✓	✓	✓
▪ Migration test OM5		–	✓	✓
US FDA CFR 21				
▪ Raw material conformity		✓	✓	✓
▪ Recipe conform §177.2600		–	✓	✓
▪ §177.2600 Extraction test in water		✓	✓	✓
▪ §177.2600 Extraction test in n-hexane		–	–	✓

**Eugen Andert, Project Leader**

“The new TPE compounds in the FC/CM3/AD1 series provide an excellent material solution for food contact applications and are characterized by extremely low migration and extraction levels. With these new and unique materials, we can cover a wide range of applications in the food contact sector, whether in packaging, kitchen utensils, or other food-related products.”

**TALK TO OUR EXPERTS!**

**KRAIBURG TPE GMBH & CO. KG - EUROPE, MIDDLE EAST, AFRICA**

✉ [info@kraiburg-tpe.com](mailto:info@kraiburg-tpe.com)

**KRAIBURG TPE TECHNOLOGY (M) SDN. BHD. - ASIA PACIFIC**

✉ [info-asia@kraiburg-tpe.com](mailto:info-asia@kraiburg-tpe.com)

**KRAIBURG TPE CORPORATION - AMERICAS**

✉ [info-america@kraiburg-tpe.com](mailto:info-america@kraiburg-tpe.com)