



CARING YOU & ME



POLICY OF QUALITY, ENVIRONMENTAL PROTECTION, INDUSTRIAL SAFETY AND ENERGY CONSERVATION OF KRAIBURG TPE TECHNOLOGY (M) SDN. BHD.

KRAIBURG TPE is an international company producing thermoplastic elastomer compounds. Our strengths are customized solutions and the development of new applications. Our strategic goals are continued growth, the expansion of our international business and continuous innovation.

In order to achieve these objectives, we have developed a process-oriented, integrated management system that meets the requirements of ISO 9001 and ISO 14001 also taking into account all aspects and specifications related to environment, energy and safety. Specific requirements of the automotive industry can be taken into account in close consultation with our customers.

The success of our business depends on the success of our customers and the well-being of our employees. Their needs are therefore a key concern in all our activities. In addition, we aim at meeting the expectations of our shareholders, our suppliers, government and society as a whole.

We want to understand what our customers wish and expect from us. We take steps to identify their needs and all future challenges at an early stage, in order to develop reliable solutions. Our customers and suppliers are our partners with business relationships based on sustainable mutual benefit.

As a company, we operate within a framework of statutory regulations. Any relevant statutory regulations must be strictly adhered to by all the employees concerned. All legally binding regulations and instructions by the authorities are strictly adhered to by all our employees.

Our corporate culture is reflected in the behavior and conduct of the company executives and employees. We foster a working environment where communication is open and constructive, where information is shared and where people cooperate with a clear focus on objectives. We are willing to talk about errors and mistakes so that we can avoid them in the future and learn from what went wrong in the past. We promote continuous training and are committed to enhance our skills level.

We condemn forced labor and child labor. We dissociate ourselves from any form of discrimination and promote equality of opportunity complying with all applicable labor laws and statutory social welfare regulations.

With regard to environment protection, occupational safety and energy management, it is our objective to protect resources, reduce or possibly avoid emissions and waste and to take all suitable measures to prevent accidents. We are careful about our physical and mental sense of well-being. The company supports our employees by running special contests and health campaigns.

Our management system is binding for all employees and must be adhered to in all activities.

The objectives and quantities targets established within our management system serve as references for our pro-active correction, prevention and improvement processes. Our continuous improvement and development thus reflects our concept of a company as a learning organization.

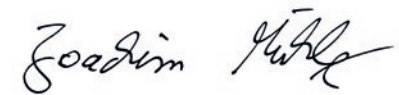
In our work, we produce quality as we are skilled in our tasks and processes. With our management system, we strive at achieving perfect quality products.

We regularly evaluate our performance, risks and the effectiveness of our management system based on the established targets. By taking specific measures and implementing projects, we continuously improve our performance around quality, workplace safety, environment protection and energy consumption at all levels and in all areas.

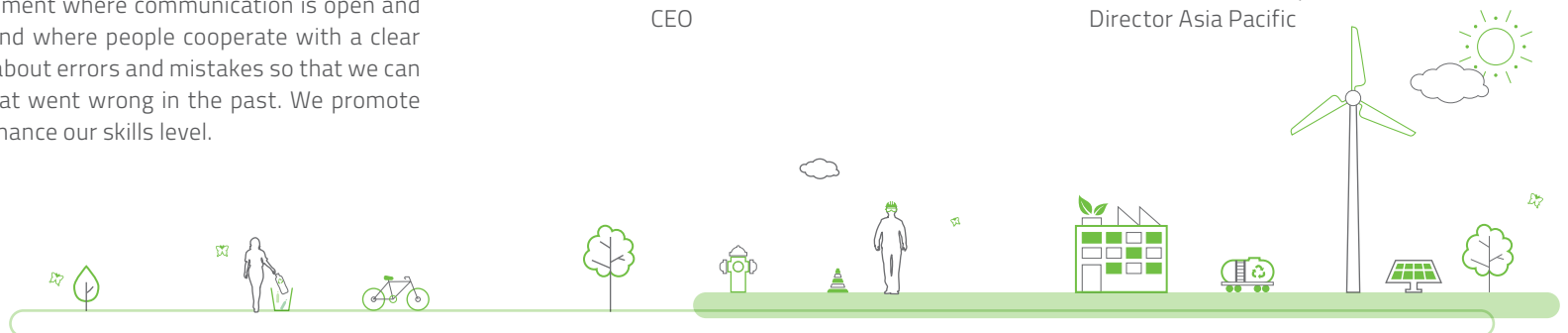
January 2020



Franz Hinterecker
CEO



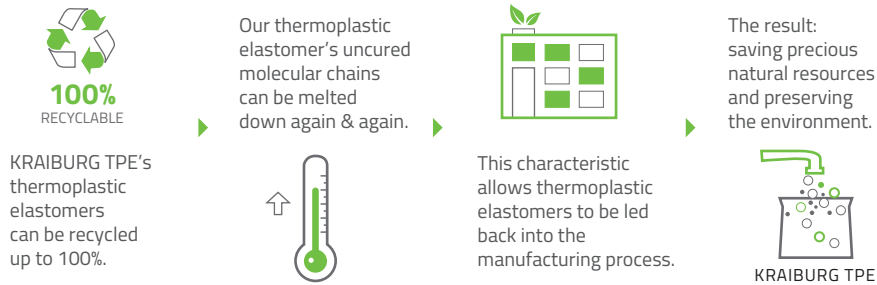
Dr. Joachim Mühlmeier
Director Asia Pacific



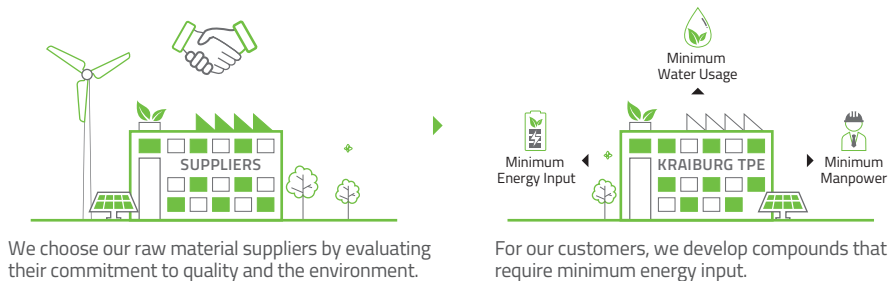
TOWARDS A GREEN & SAFE ENVIRONMENT

"We take our responsibility towards society and future generations seriously & act accordingly."
Franz Hinterecker, CEO KRAIBURG TPE

1. Our commitment to environmental protection through our materials



2. Our commitment to environmental protection through our suppliers & customers



3. Our commitment to environmental protection through our packaging



4. We organize Emergency Response & Preparedness (ERP) activities periodically



First Aid Training



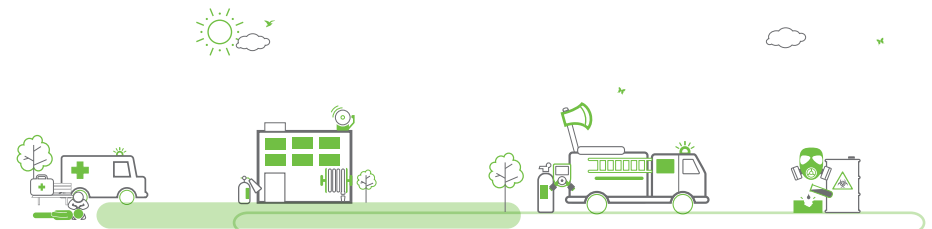
Fire Fighting Training



Emergency Drill



Chemical Spillage Drill



5. We draw up Energy & EHS activities



Energy Savings Activity



Waste Reduction Activity



Use Renewable Energy

ENERGY AWARENESS

Be part of our energy vision

WHY

Because we care about you - our customers, employees, communities and our planet. We aim to reduce unnecessary energy costs and consumption, carbon emissions and footprint. We will foster better customer relations, build healthier and safer workplaces, and promote a green, sustainable future.

HOW

By reducing unproductive energy use through our focused energy efficiency initiatives.



Reduced Water Usage



Switch Off Appliances



Energy Saving Lighting



Energy Saving Aircon



Minimum Energy Input



Automation Saves Energy



Sleep or Hibernate Mode



Insulation



Unplug Battery/ Phone Chargers



Renewable Energy

WHO

YOU! Together we can make a difference in energy conservation and build a more profitable and sustainable KTM for everybody!



HEALTH & SAFETY GUIDELINES

KRAIBURG TPE Malaysia is committed to health, safety and environment of our employees, visitors and contractors coming into the premise. We believe that all workplace injuries, environmental pollutions & occupational illnesses can be avoided by complying to the EHS legal requirements and having best practices at all time.

General Rules



You are required to register at the guard house before entering to our premises.



A special visitor's pass will be given to you which must be worn in a highly visible manner during your visit. At the end of your visit, please return your pass at the security check point before leaving.



Visitors are required to park their vehicles outside our premises. Contractors may park their vehicles at designated contractor parking area for loading/unloading purposes.



No photography or video-taking is allowed on our premises unless special permission has been obtained.



Food and beverages are only allowed at the Cafeteria.



Entry into the production and storage facilities is strictly not permitted without being accompanied by a KTM (KRAIBURG TPE Technology (M) Sdn Bhd) host.



Littering is not allowed in the premises. Please discard rubbish inside garbage bins.



DANGEROUS! - Do not touch machinery, parts or materials without prior authorization.



The company reserves the right to conduct inspections of baggage to check materials and tools carried on & through the work premises. Such materials & tools may be rejected for transport to and/or from the premises.

Health and Safety



Smoking is only allowed at the outdoor Cafeteria.



Watch out for heavy vehicles in the premises, such as forklifts & trucks.



The 15 km/h speed limit must be observed at all times throughout our work premises.



Open-toed, open-heeled or high-heel shoes are prohibited on the production floor.



Open flame is strictly forbidden in all buildings and production zones.



Weapons and explosives are forbidden at the KTM premises.

Contractor Safety



Contractors are required to comply with all the safety rules stated in the Permit to Work/related work permits. Permit shall be displayed all the time at their working site.



Use/wear personal protective equipment adhering to KTM safety requirements.



Report all accidents, injuries, near misses to your project coordinator/safety health officer/any KTM's Emergency Response Team member immediately.



All contractors are strictly not allowed to enter areas other than where they are assigned.



Ensure no property damage during the construction or renovation work. Contractors are fully accountable for any damage of/to KTM property.



If you are taking safety vest from our guard house, please return it at the guardhouse before leaving our premises.

If Fire Alarm is Activated



FIRE
ALARM

If the fire alarm rings, immediately stop work & wait for instruction to evacuate.



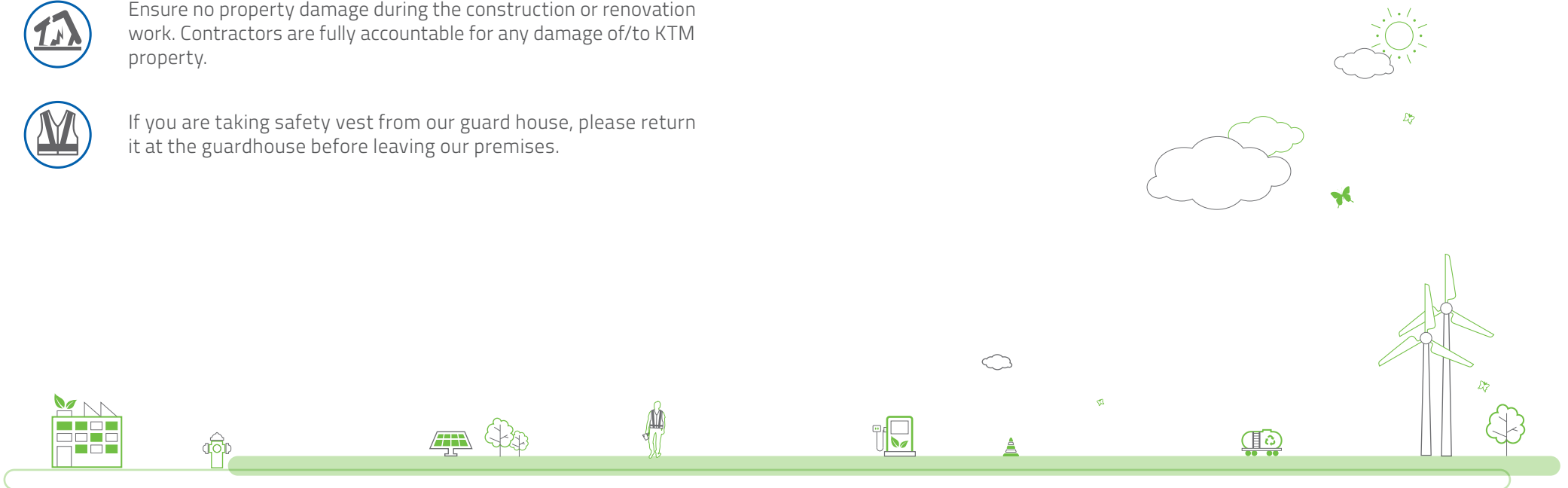
EMERGENCY
EXIT

Leave the premises via the nearest emergency exit by following the escape route. Follow all instructions from the Emergency Response Team (ERT).



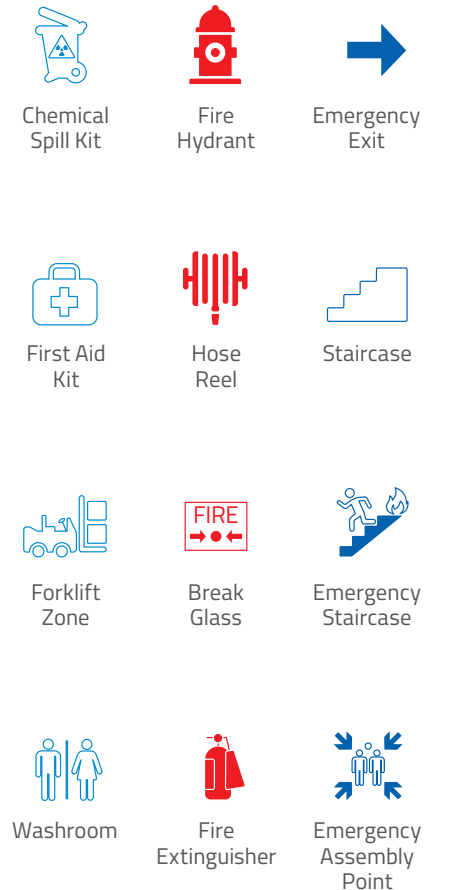
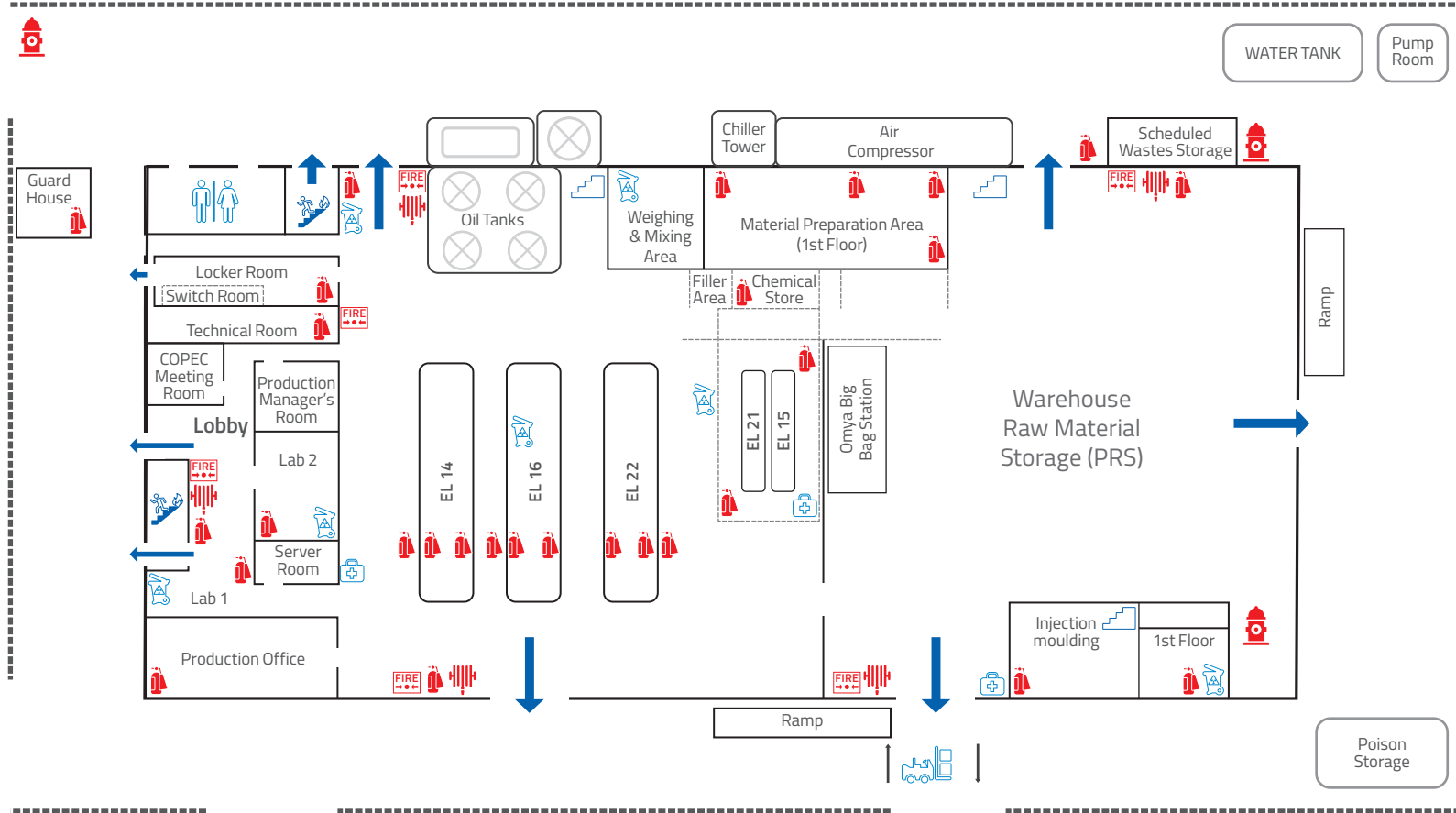
EMERGENCY
ASSEMBLY
POINT

Make your way to the emergency assembly point & wait for further instructions. Report any missing colleague/companion to ERT at the assembly area.

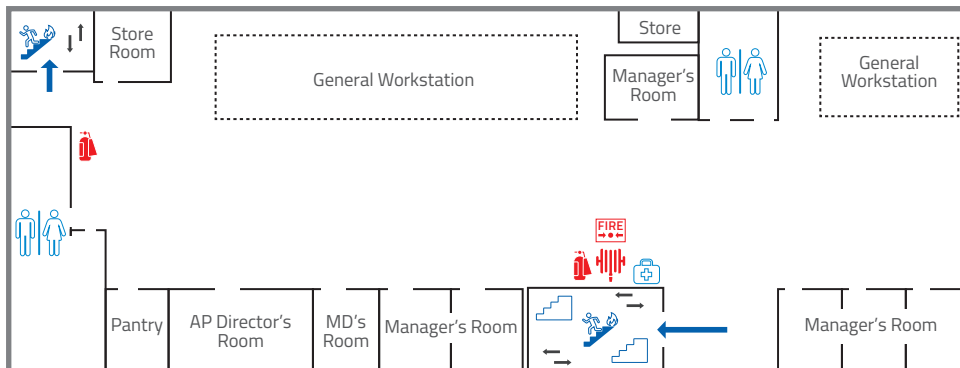


BLOCK A

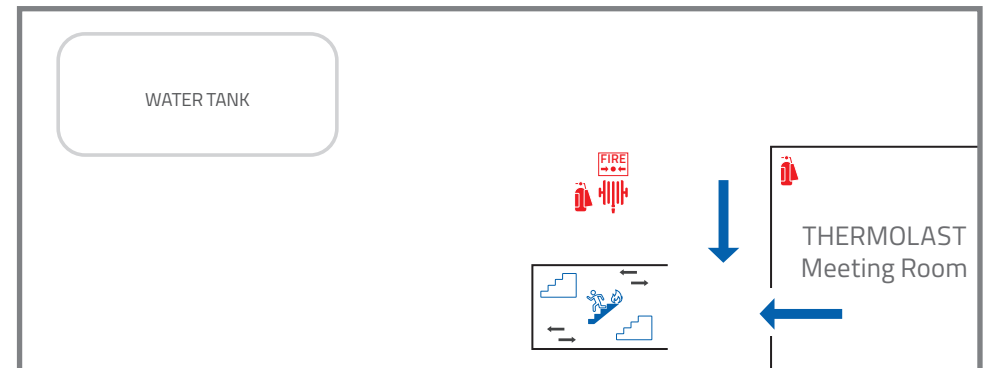
Ground Floor



1st Floor

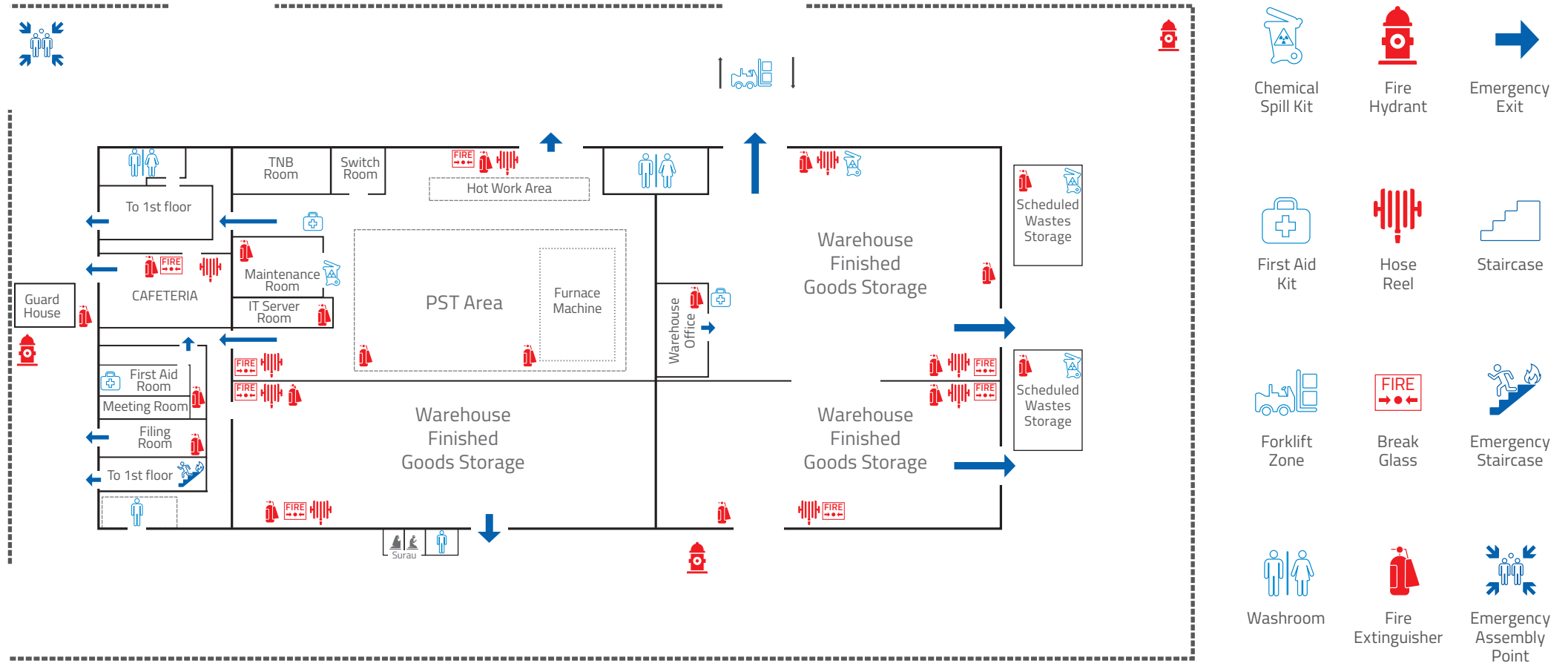


2nd Floor

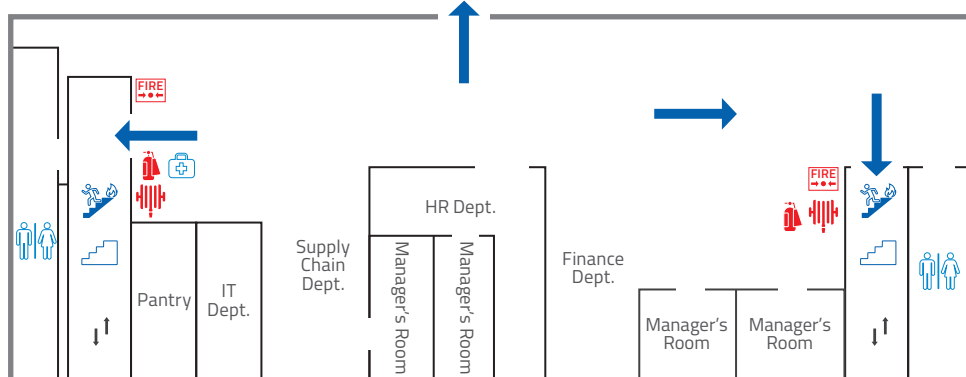


BLOCK B

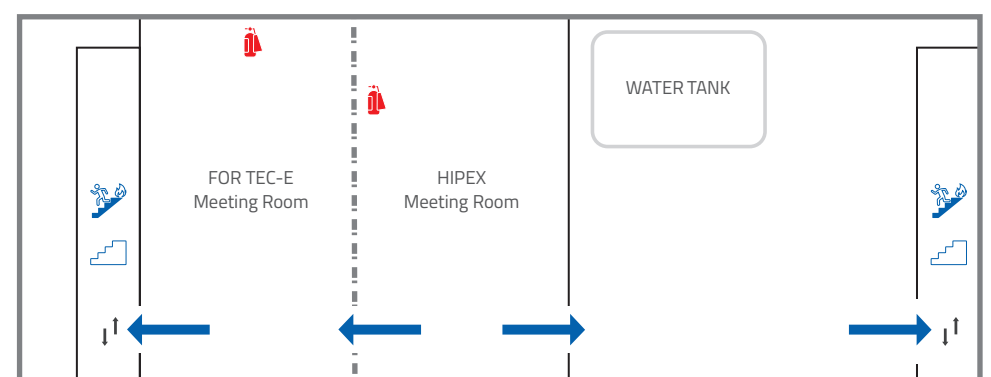
Ground Floor



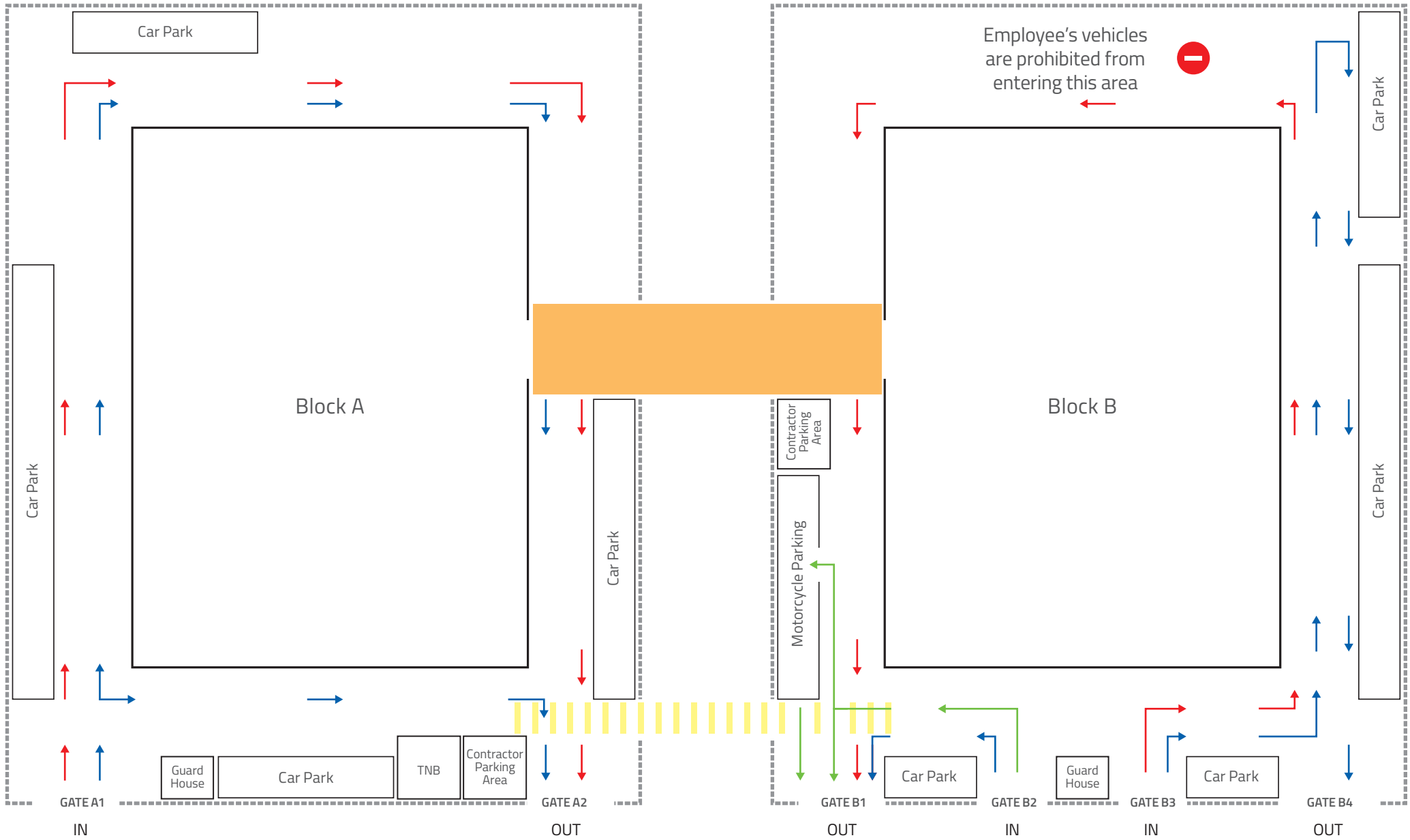
1st Floor



2nd Floor



TRAFFIC FLOW BLOCK A & BLOCK B



→ KTM Employees
 Pedestrian Walkway
 → Lorry & Truck (courier service)

→ Motorcycle Path

Only courier service & contractor's lorry can park at loading & unloading area

KRAIBURG TPE TECHNOLOGY (M) SDN. BHD.

Lot 1839, Jalan KP6 6, Kawasan Perindustrian Balakong
43300 Seri Kembangan, Selangor, Malaysia.

☎ +603 9545 6393

✉ info-asia@kraiburg-tpe.com



For contact details of our branch offices and partners, see www.kraiburg-tpe.com
Member of KRAIBURG Holding.



© Copyright 2020 KRAIBURG TPE. Subject to change without prior notice.
KRAIBURG TPE makes no warranties and assumes no liability in connection with any use of this information.
KTAP|EHSB|04|EN|1020

